

Anti-3-nitrotyrosine rabbit pAb

(3-NT pAb)

Cat#: PTM-751

Species: Rabbit

Size: 100 µl at 0.5 mg/ml

Form: supplied in liquid form

www.ptm-biolab.com.cn

service@ptm-biolab.com

0571-2883 3567

Application	Recommend dilution	Species Reactivity	Immunogen	Swissprot ID	Molecular Weight
WB, Dot, ELISA	1: 1000 for WB	All species expected	Nitrated KLH	/	multiple

****Species reactivity is determined by WB. Kept at -20°C upon receipt.**

***** Anti-rabbit secondary antibodies must be used to detect this antibody.**

Source/Purification:

This product is produced by immunizing rabbits with nitrated KLH. The antiserum was immunoaffinity purified by protein A and followed with nitrotyrosine containing peptides.

Recommended Applications:

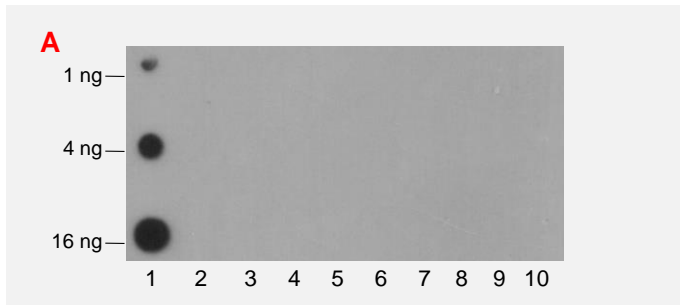
ELISA, Dot blot, Western blot. Recommended antibody dilution: WB: 1:1000

NOTE: For WB, incubate membrane with diluted antibody in 5% nonfat milk, 1 x TBS, 0.1% Tween-20 for two hours at room temperature with gentle shaking. Prepare working dilution immediately before use. Use at an assay dependent concentration. Optimal dilutions/concentrations should be determined by the end user. Not yet tested in other applications.

To obtain optimal results with this antibody please use PVDF instead of nitrocellulose membranes.

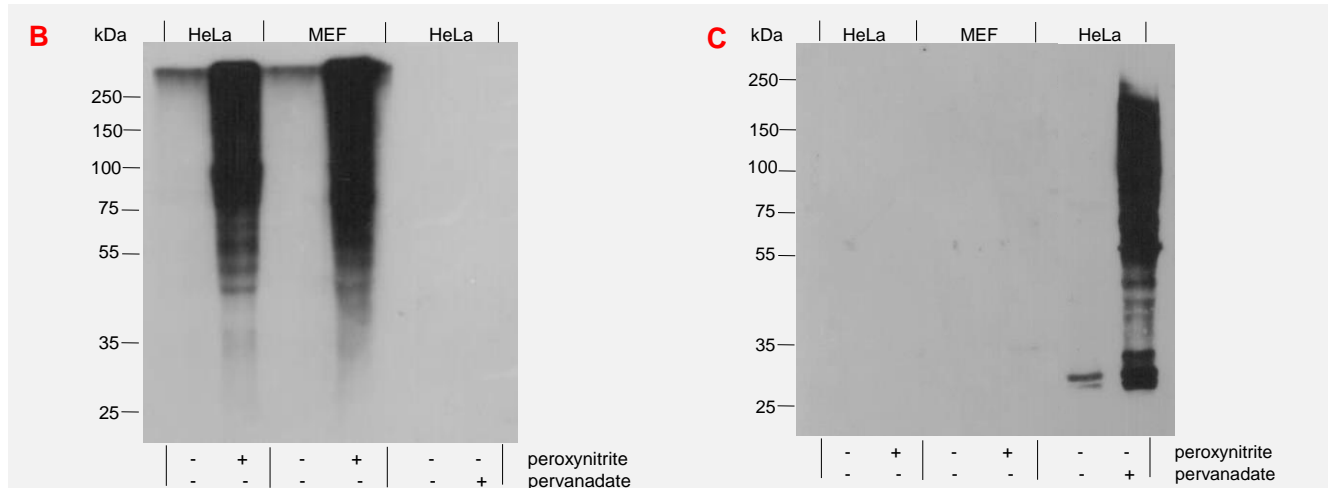
Scientific Description:

Nitrotyrosine is a product of tyrosine nitration mediated by reactive nitrogen species such as peroxy nitrite anion and nitrogen dioxide. It is very stable and so is suitable for analysis in biological sample such as plasma, lung aspirants-BALF (Broncho alveolar lining fluid) and urine. Increased nitrotyrosine levels have been associated with several physiological and pathological conditions and is considered a marker of NO-dependent, reactive nitrogen species-induced nitrate stress. Research shows that nitrotyrosine levels can be reduced by N-acetyl cysteine which is a precursor to glutathione, one of the body's primary endogenous antioxidants.



No.	Peptide	No.	Peptide
lane 1	3-NT library	lane 2	Kac library
lane 3	Kpr library	lane 4	Kbu library
lane 5	Ksu library	lane 6	Kcr library
lane 7	p-Tyr library	lane 8	p-Ser library
lane 9	p-Thr library	lane 10	Library control

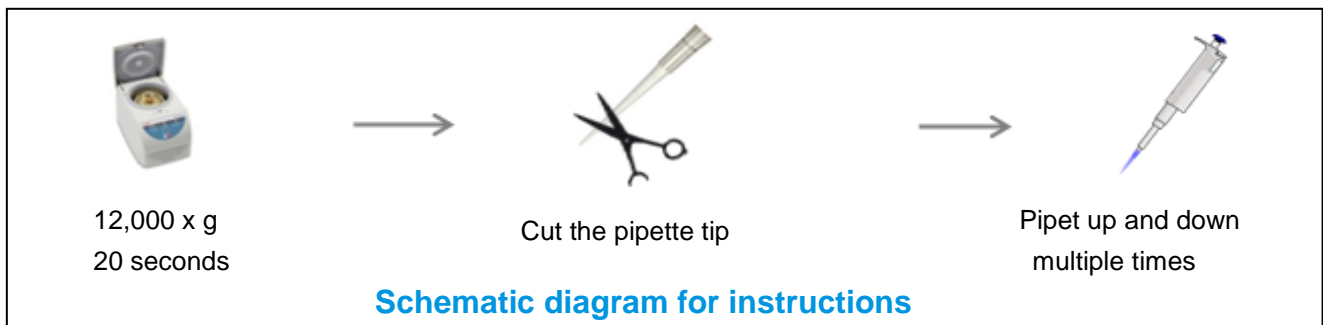
Figure B: Dot blotting analysis on indicated amount of peptides using 3-nitrotyrosine rabbit pAb. The list of peptides is included in the table on the right.



Western blot analysis on 30 µg of extracts from HeLa and MEF whole cell lysates, untreated or treated with peroxyntirite(3 mM, 30 mins) or pervanadate(3 mM, 30 mins), using anti-3-nitrotyrosine Antibody (**Figure B**) or anti-phospho-Tyrosine rabbit pAb (PTM-702) (**Figure C**).

Storage & Stability:

The antibody is kept in PBS with 50% glycerol and 0.01% sodium azide. Upon receipt, please centrifuge the antibody at 12,000 x g for 20 seconds and store the antibody at -20°C. Avoid repeated freeze/thaw cycles. Stable for 12 months from date of receipt. Leave the antibody at room temperature for 2 minutes and gently mixed using pipette before usage.



Application Key: WB-western

ChIP-chromatin immunoprecipitation

IP-immunoprecipitation

Modification Key: 3-NT-3-nitrotyrosine

ac-acetyl

cr-crotonyl

bu-butyryl

pr-propionyl

su-succinyl

Species Cross-Reactivity Key: H-human

M-mouse

R-rat

Mk-monkey

All-all species expected